

# ***TC3500 Tire Changer***

***The World Standard in Performance Wheel and Tire Handling***

***NEW!***  
***Side-Shovel***  
***Option***

***Safely Handle the World's  
Toughest Tire/Wheel  
Combinations with Ease!***

***HUNTER***  
***Engineering Company***

# Exclusive Features Easily and Safely Handle Today's Toughest Tire/Wheel Combinations



The Hunter TC3500's exclusive features operate in unison to easily and safely change the world's toughest new performance tires and wheels. It is the professional's "standard," specified and field-proven by car and tire manufacturers, service shops and racing teams.

## 1. Floating 3-Point Articulated Mounting Arm

- Faster and easier to use than any other design.
- Unlike conventional rim clamp mounting arms, there is no swing arm obstruction when servicing extremely wide wheels and tires.
- No need to adjust the arm away from the wheel. The head follows rims without damage even when the wheel is clamped off-center.
- Exclusive polymer mount/demount head\* removes the potential of steel-head-contact damage, rides closer than steel-head designs and reduces stress to beads on low-profile tires.
- Force Multiplier helps with mounting and demounting low-profile tires.
- Mechanical bead pusher is great for handling stiff, low-profile tires.

## 2. Spring-Loaded Wheel Centering Support

- Work surface remains at consistent height regardless of rim width.
- "Lifts" tire to the operator upon release. Helps prevent back injury.

## 3. Exclusive "Tulip" Wheel Clamping System

- Allows wheel to move in unison with hydraulic roller forces without risk of bending or damaging rim.
- Eliminates steel-jaw clamping, which can damage the surface of exotic wheels.
- Clamping arms, brake and motor are sealed against dirt, debris and moisture.
- Eliminates traditional table designs that may act as a "launch pad" in case of tire failure.
- Standard Wheel Extension Kit easily adjusts for internal or external clamping of wheels up to 24 inches.



\* Polymer mount/demount head is a wearing component designed to protect tire and rim.



*TC3500-SS includes optional Side Shovel Bead Loosener.*

#### 4. All Functions Driven by Compressed Air

- Reciprocating multi-piston air motor generates high torque and bi-directional 360° rotation, requires no electric hookup and is extremely quiet.
- Variable speed operation up to 15 rpm in either direction.
- Cover and rubber bellows seal the motor, brake assembly and clamping arms against dirt, debris and moisture.

#### 5. Simple Two-Finger Controller

- Air-over-hydraulic two-stage system allows fast positioning and operation of both upper and lower bead rollers.

#### 6. Exclusive Hydraulic Bead Roller System Aids Mounting, Demounting and Ultra-High-Performance Bead Loosening

- Safely and easily handles ultra-low-profile tires, rim protection sidewalls, EMT Goodyear, Michelin and Bridgestone runflat designs.
- Easily rolls the tire off or on the rim while reducing the potential for damage.

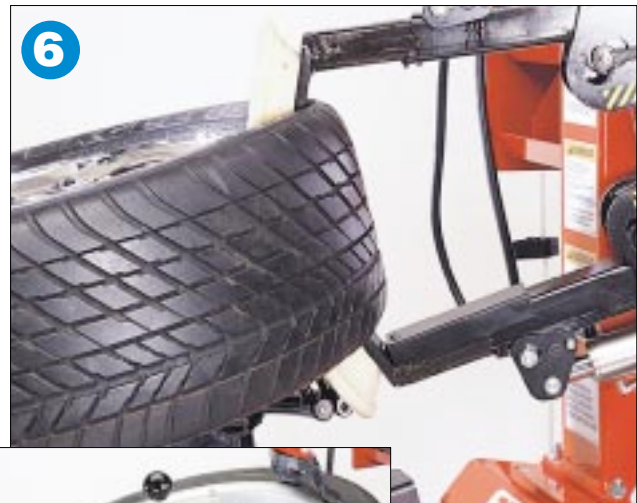
#### 7. Tilted Ergonomic Design for Ease of Operation

- Allows unobstructed lower bead access for lubricating before tire removal.
- Complete operation, including bead loosening, can be performed from one position, saving time and physical energy. Requires no bending over for bead loosening.



#### 8. Side Shovel Bead Loosener Now an Optional Feature

- Saves time by simplifying the procedural steps required when servicing reverse drop-center wheels.
- Side shovel bead loosener allows servicing niche applications such as motorcycle and ATV tire/wheel assemblies.
- Ease of use and common familiarity assists inexperienced operators until they can get up to speed using the bead roller assembly on high-performance applications.



*Bead Depressor "Tail" aids in positioning low-profile tires down into drop-center for mounting and demounting.*



## ***The TC3500 Makes Match- Mounting Easy!***



***The Hunter TC3500 and GSP9700 make a great combination to eliminate vibration problems, reduce comebacks and increase customer satisfaction.***

When used in conjunction with Hunter's GSP9700 Road Force Measurement® System, the TC3500 quickly and easily helps to eliminate vibration problems that balancers alone can't fix.

The GSP9700 uniquely identifies tire force variation- and rim runout-related vibration that can often be eliminated by repositioning the tire on the rim.

The TC3500 makes match-mounting easy with two-finger control that allows the operator to spin the tire on the wheel regardless of aspect ratio or tire stiffness.



***Use the TC3500 to easily and safely rotate the tire on the wheel to eliminate vibration.***



***Exclusive, two-finger control matches tire to wheel even on difficult low-profile tires and runflats.***

# Specifications\*

Clamping System Rotating Speed	15 rpm (variable)
Recommended Air Supply**	145 ± 30 psi
Air Consumption (approximately)	12 CFM
Max. Tire Diameter	43.5"
Wheel Clamping Wheel Diameter Range	
Internal Clamping	10"-26"
External Clamping	9"-26"
Hydraulic Bead Loosening Roller System	
Max. Bead Roller Opening Width	19"
Diameter Range	13"-24"
Bead Roller Power; <u>Each</u> Roller	4,170 lbs. @ 140 psi
Bead Loosening Side Shovel [Optional]	
Max. Bead Loosening Opening Width	17"
Bead Loosening Power	3,300 lbs. @ 140 psi
Shipping Weight	560 lbs.
Max. Space Dimensions:	
Length	43"
Height	72"
Width	43"

\* Wheel specifications are based on nominal wheel sizes. Some dimensions, capacities and specifications may vary depending on tire and wheel configurations.

\*\*Air pressure over 145 psi requires an in-line regulator.



**TC3500-SS**

## Options

See Form 4042T for a complete listing of optional accessories available for the TC3500.

## Models

- TC3500** EVO Tulip Clamping Tire Changer with Bead Roller Assembly and Standard Accessories
- TC3500-SS** Same as above including Side Shovel Bead Loosener

### HUNTER TIRE CHANGER APPLICATION CHART

	TC3500**	TC3250-Plus**	TC3250*	TC3100-Plus	TC3100**	TC3000**	TC2000**
<b>Matchmounting Ultra High-Performance</b>	●	◐	◑	◑	◑	◑	○
<b>Larger Than 20-inch SUV Wheels</b>	●	◐	◑	◑	◑	◑	◑
<b>Runflat, Zero-Pressure Tires</b>	●	●	◐	◐	○	○	○
<b>Beadlock AH2 and Exotic Wheels</b>	●	◐	◐	◐	○	○	◑
<b>Ultra High-Performance Wheels</b>	●	◐	◐	◐	◐	◐	◑
<b>Low-Profile Custom Street Performance</b>	●	●	●	◐	◐	◐	○
<b>Conventional Alloy Wheels and Common Aspect Ratio Tires</b>	●	●	●	●	●	●	●
<b>Steel Wheels</b>	◐	◐	◐	●	●	●	●
<b>Medium-Duty LT Tires</b>	◐	◐	◐	◐	◐	◐	●
<b>Oversized Off-Road LT Tires</b>	●	◐	◐	◐	◐	●	●

- Most efficient
- ◐ Performs applications with efficiency
- Capable of performing most applications
- ◑ Capable of performing some applications
- ◑ Not recommended

\*\* Options may be required

For a video demonstration see Form 4254T.

Because of continuing technological advancements, specifications, models and options are subject to change without notice.

Visit our Web site at [www.hunter.com](http://www.hunter.com)

**HUNTER**  
Engineering Company

11250 Hunter Drive, Bridgeton, MO 63044  
800-448-6848 • 314-731-3020 • FAX: 314-731-1776